

Newsletter No. 2

Spring 2017

The Bow Horne Bay Community Club has been going strong since 1970! We represent the areas of Lighthouse Country: Bowser, Horne Lake, Qualicum Bay and Deep Bay.

Most of our events throughout the year are held at the Lighthouse Community Centre but we are a separate registered Society with a separate Board of Directors.

You can usually find our table at the Second Sunday Market at the Centre so stop by and say 'Hello', take out a Membership either supporting or active and watch for our posters around town inviting you to an event as well!



TRIVIA NIGHT

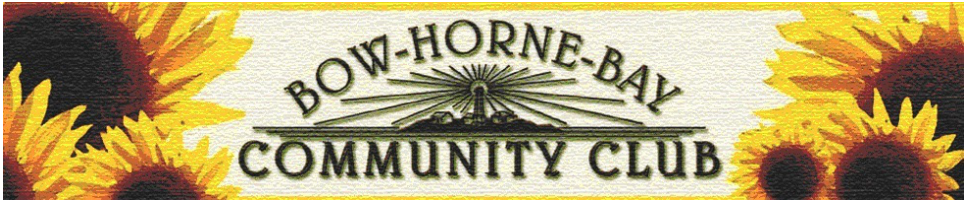
A great night was celebrated on March 11th at the Hall -- some hard questions, some easy, great fun and a good turnout. During one of the intermissions, there was a game of Family Feud. The plates of home baked goodies were flying off the tables!

TAKING CARE OF BUSINESS

(aka Annual General Meeting)

March 16th was our Annual General Meeting held at the Lighthouse Community Centre in the Nordin Room, followed by our regular monthly meeting. These are normally held the 3rd Thursday of each month. We have a brand new Board of Directors elected, and it is shaping up to be another great year.

Community spirit at its best



What are we working on?

At the moment we are planning our 47th Lighthouse Country Fall Fair. More importantly, we're getting our "Fall Fair Guide" ready so you can pick a category to enter and possibly win a blue ribbon and bragging rights. We are also obtaining our IMPORTANT advertisers to help finance the costs associated with producing the guide. When the guide is complete and out in the communities in mid-May, be sure to pick one up and see our "Special Contests" page where you can win \$25. There are also a few contests celebrating CANADA 150 as their theme.

Dates to remember

- | | |
|-------------|---|
| May 14 | Visit our tables in the Nordin room at the Hall and order a custom painted sign for Mom's garden or pick out another gift crafted by our talented volunteers. |
| September 1 | Bring your exhibits to the Community Centre for the Fall Fair |
| September 2 | Lighthouse Country Fall Fair - 10am to 4pm |
| October | Fall Fair Volunteer Appreciation Dinner |
| October | Lighthouse Family Halloween Party |



Mother's Day Basket Sale
at the Second Sunday Market 2015

OUR COMMUNITY SHOWCASE EVENT THE LIGHTHOUSE COUNTRY FALL FAIR

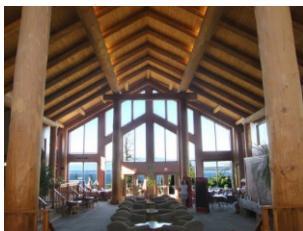


Fall Fair Flower Exhibit

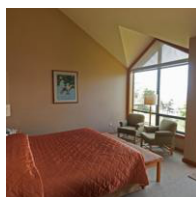


Fall Fair Sewing Exhibit

**Our Fall Fair Raffle prizes have been
selected & tickets will be on sale
starting in April at the
Second Sunday Market!**



TSA-KWA-LUTEN LODGE
Main Hall (left) and Room (below)



1st Prize

Two nights - Two dinners - Two breakfasts at the
TSA-KWA-LUTEN LODGE on Quadra Island, BC

2nd Prize

Vizio 50" D-Series Smart TV

3rd Prize

Guitar donated by Blackwell Guitars

“Volunteers do not necessarily have the time; they have the heart!”

Current Executive

President: Joanne Ferreiro
Vice President: Patricia McLean
Secretary: Lynda Hearn
Treasurer: Jo-Anne Harrison
Directors: Terri Bowen, Lois Curry, Zoe Fiddler,
Marg Macintosh, Denise Schlitz
Club Photographer: Louise A. Duncan

www.communityclub.ca · bowhornebayclub@gmail.com
bowhornebaycommunityclub on facebook

Find out more about us!

Come join us the 3rd Thursday of the month at the Lighthouse Community Centre for our month meeting. All are welcome!

Want to have fun and be part of the

The Fall Fair always needs volunteers and we would love to have your help! Our Volunteer Co-ordinator this year is Jo-Anne Harrison and she can be reached at 250-757-2300 or email her at bowhornebayclub.info@gmail.com and she will be happy to find you something fun to do.

Lighthouse Country Fall Fair



This newsletter is published by:	The Bow Horne Bay Community Club
Current Mailing Address:	c/o 375 Station Road, Fanny Bay, BC V0R 1W0
Phone Number:	778-427-8806
Unsubscribe Request:	Email: jmclean01@shaw.ca or bowhornebayclub@gmail.com
	In the SUBJECT LINE enter the word “UNSUBSCRIBE” and hit Send